

Advanced Earthing Electrodes

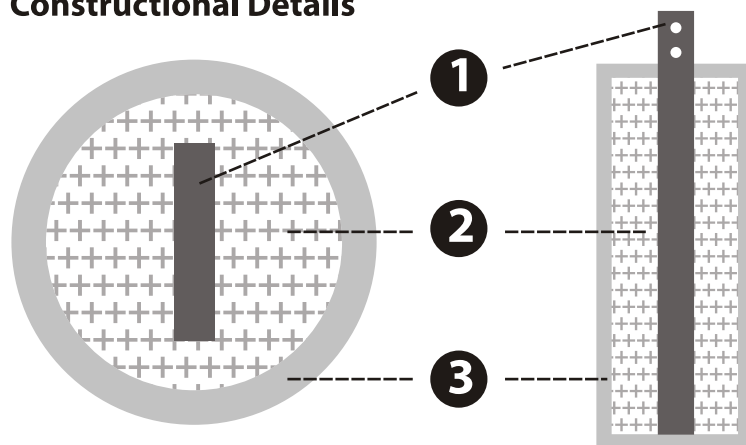
EarthPlus advanced earthing electrodes are engineered to endure the most enviously corrosive environments. These electrodes are robust enough to withstand fault currents of very high magnitude. Fabricated from excellent quality G.I. pipes, these electrodes are virtually indestructible.

The pipes are profiled with proprietary 'super conductive crystalline compound' which encloses the primary conductor completely, increasing it's surface area and also forming a protective layer against corrosion. It never allows the primary conductor to come in direct contact with corrosive elements in the surrounding soil.

Features :

- 1) Robust design to last for a lifetime
- 2) Three level protection from corrosion
 - a) Outer pipe
 - b) Layer of super conductive crystalline compound
 - c) Primary conductor

Construational Details



1. Primary Conductor (G.I. or Copper)
2. Super Conductive Crystalline Compound
3. Pipe (G.I. or Copper)



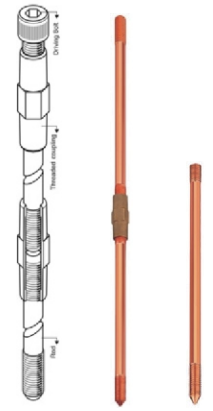
Available in various sizes and specifications to suit the application:

Model #	Length mm	Dia. mm	Primary Conductor size	Primary Conductor Type
SMI-250G	2000	50	40x6x2000mm	GI
SMI-350G	3000	50	40x6x3000mm	GI
SMI-280G	2000	80	50x6x2000mm	GI
SMI-380G	3000	80	50x6x3000mm	GI
SMI-250C	2000	50	40x6x2000mm	Copper
SMI-350C	3000	50	40x6x3000mm	Copper
SMI-280C	2000	80	50x6x2000mm	Copper
SMI-380C	3000	80	50x6x3000mm	Copper

Note: Electrodes can also be manufactured as per clients' given specifications.

COPPER BONDED EARTH-RODS

Manufactured from high tensile low carbon steel by molecularly bonding 99.9% pure electrolytic copper, these earth rods conform to BS 4360 grade 43A. Each rod is treated with Benzol triazole derivatives to prevent oxidation of copper bonding. The threads are formed by roll threading process which ensure strength and maintain the molecularly bonded copper along the full length of the threads. The rods can be deep driven manually or by using power hammer.

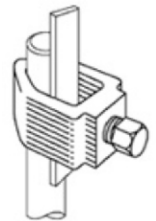
**COUPLER HEAVY DUTY**

These couplers are made of high grade material for higher strength with counted bore for protecting the rod threads from damage.

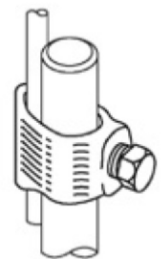
**ROD TO TAPE CLAMP - TYPE 'A'**

A variety of earth rod clamps suitable for different applications. Conductivity, Mechanical strength and corrosion resistance are important considerations in clamp design to ensure an earthing system perfect for the life time of the system all clamps are made of high strength copper alloys bodies and screws of aluminum bronze, phosphor bronze, and stainless steel etc... (commercial Brass is never used).

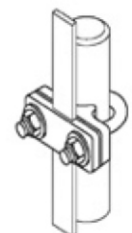
Used for joining earth rods to copper tapes, these clamps are available to suit different sizes of earth rods and copper tapes.

**ROD TO CABLE CLAMP - TYPE 'G'**

These clamps are used for joining earth rods to copper cables.

**ROD TO TAPE CLAMP - TYPE 'E2'**

These clamps are used to connect tape to the earth rod. This clamp is provided with additional plate to fix the tape in vertical position also.

**EARTH BARS AND DISCONNECTING LINKS**

Earth Bars are an efficient and convenient solution for providing a common earth point to connect to the main earthing System. Integral disconnecting links are provided for isolation at the time of testing. These earth bars come in variety of specifications and sizes to suit different applications, the standard sizes are shown in the table with many variations.

